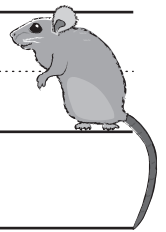
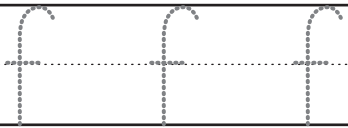
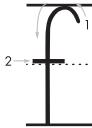


Handwriting practice lines for uppercase F. The first row contains three dotted F's for tracing. Below are four more rows of empty handwriting lines (top solid, middle dashed, bottom solid) for independent practice.



Handwriting practice lines for lowercase f. The first row contains three dotted f's for tracing. Below are four more rows of empty handwriting lines (top solid, middle dashed, bottom solid) for independent practice.